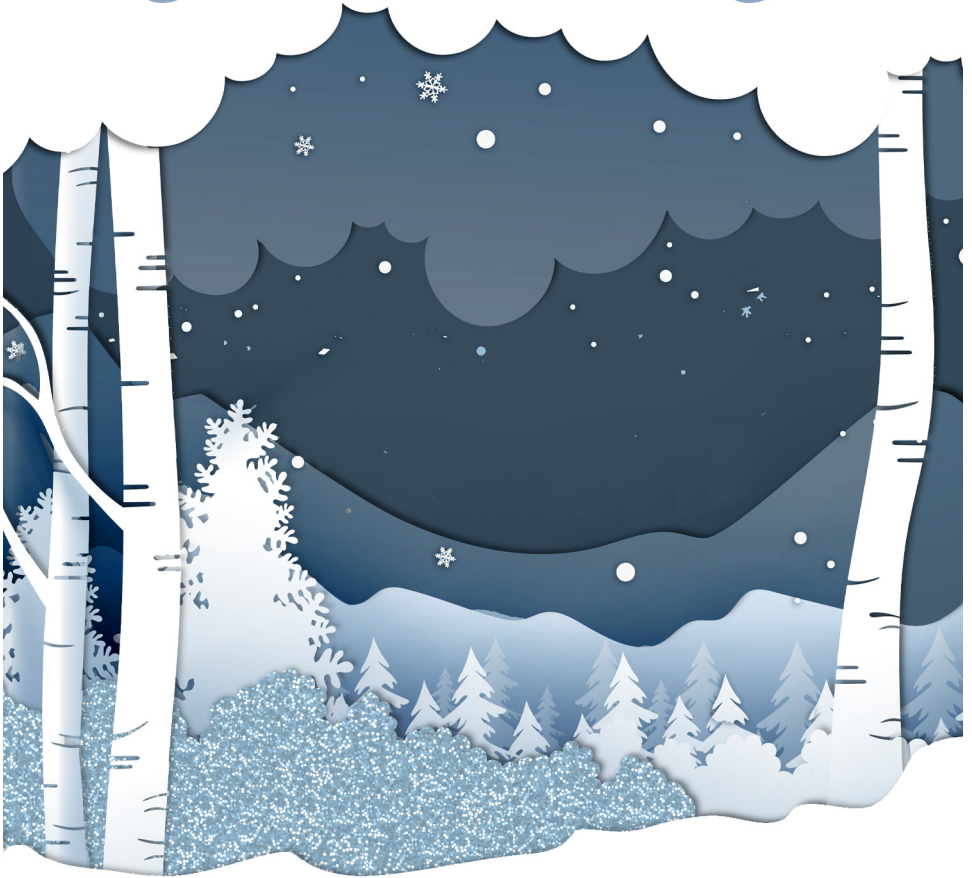


Let it snow, let it shine, and watch art come alive at

Blessed Sacrament Catholic Church

NCLA

Night of the Living Art



November 8, 2025

Blessed Sacrament | 7-10:30 PM, VIP Entry at 6 PM



Welcome to Night Of The Living Art 2025: Winter Wonderland!

Schedule of Events

6:00 to 7:00 - VIP Hour in the Small Gym and Commons

6:30 to 6:40 - VIP viewing of The Last Supper in the Small Gym

7:00 to 7:45 - Art Set A will be on display in the Main Gallery

7:30 to 7:40 - The Last Supper Final Viewing

7:45 - 8:30 - Art Set B will be on display in the Main Gallery

8:30-9:10 - Art Set C will be on display in the Main Gallery

9:15 - Live Auction begins in the Small Gym

The Silent Auction will close 15 minutes after the conclusion of the Live Auction.

10:30 Night of the Living Art closes for 2025.

Be sure not to miss out on:

The Silent Auction

with items displayed in the Main Gallery, the Commons, & the Small Gym

The Making Spirits Bright Wine and Liquor Pulls
& Mystery Boxes in the Small Gym

The Nighthawks Bar in the Small Gym featuring Signature Drinks

“Sled Run Sour” a cranberry bourbon sour with candied rosemary garnish
and Maker’s Mark Bourbon

“Sleigh Ride Spritz” a harvest apple ginger spritz mocktail

The Hot Drink Bar and S’mores Station

in the Commons

Photo Opportunities

The Sleigh in the Small Gym and the Snow Globe in the Commons

NOLA 2025 Committee

Event Chairperson - Jean Whisenhant

Art Chairpersons - Emily Scott and Katie Brinkman

Performance Art Chairperson - Kelcy Mohr

Auction Chairperson - Morgan Palace

Beverages Chairperson - Meg DeMarco

Decorations Chairperson - Angela Ruda

Food Chairperson - Elizabeth Tackett

Tickets & Advertising Chairperson - Grace Whisenhant

NOLA Treasurer - Dana Johnson

Volunteers Chairperson - Renee McGlynn

Altar Society 2025 President - Lisa Burgess

Altar Society 2025 President Elect - Ruth DeLange

Thank you to those that have contributed
to the success of NOLA 2025: Winter
Wonderland.

We greatly appreciate: your patronage of this event; your donations of time, talent, and treasure. Your generosity helps to support the Altar Society's mission to enhance our worship at Blessed Sacrament Church by devoting our Time, Talent, and Treasure to create an Altar that bespeaks the Glory of God and to promote friendship and fellowship among the women of the Parish.

Please enjoy this evening of living art, fabulous performances, delicious food and drinks, auctions, and so much more!

With much gratitude,

Jean Whisenhant - 2025 NOLA Chairperson

Silent Auction

You don't want to miss out on the unique auction items this year!

Make sure to take a look at the Silent Auction items located in the Main Gallery, the Commons, and the Small Gym.

Please take a minute to sign up for bidding via your cell phone. You will have easy and convenient bidding at your fingertips as you enjoy the art!



Scan here

**or text NOLA to
855-800-4975**

Follow the link and simply enter your cell phone to register and start bidding!

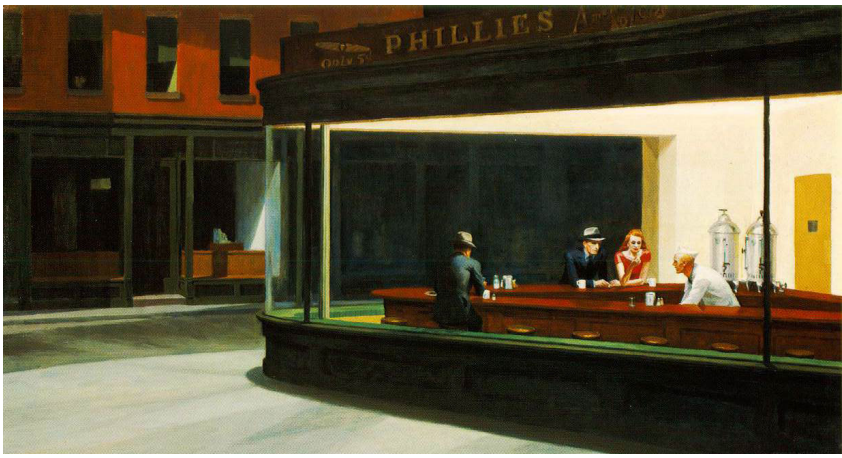
If you've already gotten a text tonight from us you are all set!

Happy bidding!

Need Help? Hate your phone?

That's cool, just visit our Bidder Concierges located near the Ticket Booth in the Small Gym. They can help, answer any questions, or place a bid for you.

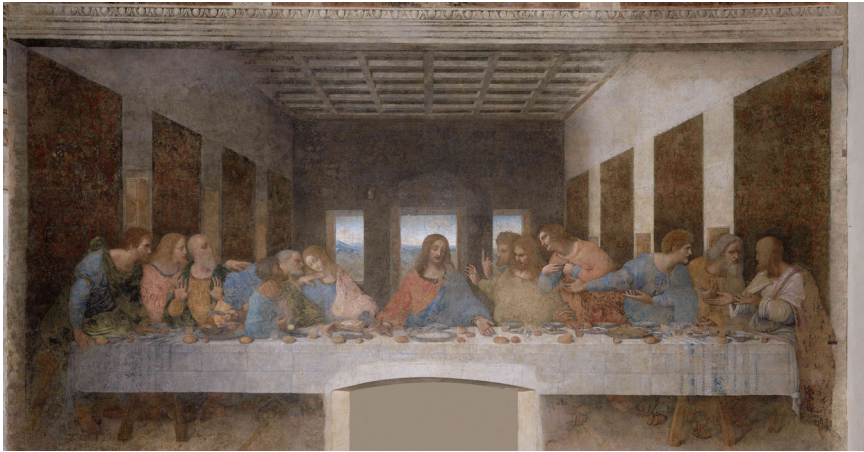
Phone charging station available next to the Ticket Booth in the Small Gym.



Nighthawks *Edward Hopper, 1942*

Models: Brian Norris, Victoria Norris, John Hammans, Luke Campbell

Hopper's *Nighthawks* portrays a late-night diner, its figures quiet and detached within the empty city streets. Hopper turns this scene, as so many of his others, into a study of human solitude. *Nighthawks* has been in every NOLA since we started in 2011; and John Hammans, the bartender each time.



The Last Supper *Leonardo da Vinci, 1495-1498*

Models: Daniel Grady, Alex Crownover, Patrick Wetta, Jeremy Hastings, Mike Belluomo, Samuel Donze, Paul Wagle, Danny Mitchell, Greg Brinkman, Kenny Woodruff, Kyle Herspring, Rich Stafford, Luke Luttrell

VIP viewing at 6:30-6:40, 2nd and final viewing: 7:30-7:40

Da Vinci's monumental fresco depicts the moment Jesus tells his disciples one will betray him. Each figure reacts with unique emotion, creating a masterpiece of human expression and composition. The linear perspective draws all eyes toward Christ at the center, calm amid turmoil. Time has worn it down, but it endures through many restorations.



Circus Acrobats

Marc Chagall, 1950

Model: Elizabeth Scott, Set A

Chagall's *Circus Acrobats* transforms a performance into a dreamlike vision. Figures float and twist in the air, surrounded by fantastical color and movement. The circus, for Chagall, symbolized joy, fragility, and imagination—the poetry of human experience.



A Lady in a Fur Wrap

El Greco, circa 1580

Model: Sarah Kisling, Set A

This mysterious portrait, long attributed to El Greco, shows a woman wrapped in luxurious fur, her face illuminated with soft, haunting light. Her gaze combines elegance with introspection. This work embodies both Renaissance refinement and spiritual depth.



Eugene Manet and his Daughter in the Garden

Berthe Morisot, 1883

Models: Andy & Dorothy Naumann, Set A

Morisot paints her husband and daughter in dappled outdoor light, using loose brushwork that captures both intimacy and movement. The scene feels spontaneous, as if glimpsed in passing. The painting reflects her unique Impressionist vision of family and femininity.



The Knitter

William Adolphe Bouguereau, 1884

Model: Anna Whitson, Set A

Bouguereau's *The Knitter* portrays a peasant girl absorbed in her handiwork, rendered with exquisite realism. Her youthful face and simple attire contrast with the artist's refined technique. The calm setting turns humble labor into timeless grace. Bouguereau's skill turns everyday virtue into classical beauty. He was a great master of the Salon artists.



Dancers in Blue

Edgar Degas, 1884

Models: Kelcy's Dance Studio

**Dancers: Avery Allums, Eva Dols,
Claire Monger, Lucy Moss**

performances throughout the night

Degas captures ballerinas, his favorite subject matter, mid-rehearsal, their movements framed by blue tutus and dynamic composition. The dancers are shown as real women caught in rhythm and concentration. Degas reveals grace in effort in this Impressionist painting.



Cestello Annunciation

Sandro Botticelli, 1489

Addi Christensen, Hailey Garon, Set A

Botticelli's *Cestello Annunciation* captures the sacred moment when the angel Gabriel greets the Virgin Mary. The figures are graceful and restrained, surrounded by serene architecture and soft light. Mary's gentle gesture conveys humility and acceptance. The calm symmetry and delicate color reflect Botticelli's refined sense of divine beauty.



Portrait of Adele Bloch Bauer I

Gustav Klimt, 1907

Model: Debra Pirtle, Set A

Klimt's painting, made for Adele and her husband Ferdinand, shimmers with gold leaf and intricate pattern. Adele's face stands out against an abstract pattern of gold. The painting was stolen by the Nazis in 1941. Ferdinand's niece filed a lawsuit and was awarded the painting. It can now be seen at the Neue Galerie in New York.



The Laughing Cavalier

Frans Hals, 1624

Model: Braden Barr, Set A

Hals captures lively character in this portrait from the Dutch Golden Age. His slight smile and twinkling eyes give the painting its title, though he is not laughing so much as smirking with charm.



The Cradle

Berthe Morisot, 1872

Models: Anna Catanese, Baby Marcia Burgardt, Baby Patrick Wagle, Set A

Morisot, one of the few prominent women of the Impressionist circle, paints a tender scene of motherhood. A mother gazes lovingly at her sleeping child, her expression soft and protective.



Idealized Portrait of a Lady

(Portrait of Simonetta Vespucci as Nymph)

Sandro Botticelli, 1480

Model: Izzy Lehmen, Set A

Botticelli captures an ethereal beauty in this portrait, believed to represent Simonetta Vespucci, a famed muse of Renaissance Florence. She represents the era's ideals of grace and virtue. Botticelli's style gives her a classic and whimsical look.



Angel with the Sudarium

Cosimo Fancelli, 1669

Model: Rosie Churray

viewings throughout the night

This Baroque sculpture shows an angel holding the cloth that bears the image of Christ's face. Fancelli's mastery of marble gives the angel a sense of motion and divine tenderness. The fluttering drapery gives a heavenly spirituality to the piece. This piece can be found on Ponte Sant'Angelo (Bridge of Angels) in Rome.



Angel with the Lance

Domenico Guidi 1669

Model: Kate Hild

viewings throughout the night

This statue is also one of the ten angels on Ponte Sant'Angelo (Bridge of Angels) in Rome. Guidi's angel stands in poised readiness, holding the weapon that pierced Christ's side. This Baroque style comes to life with the details of the robes flowing in the wind.

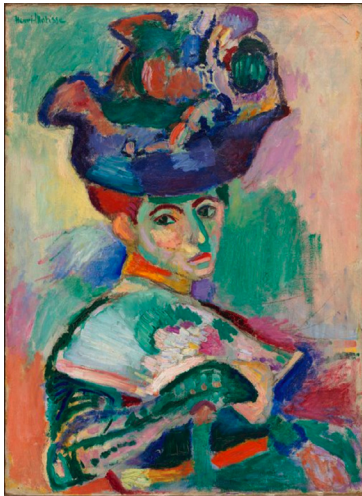


Reading at a Table

Pablo Picasso, 1934

Model: Brenna Barlow, Set B

In this Cubist-inspired work, Picasso combines geometric form and vivid color to portray a woman absorbed in reading. Her face and hands are shown from multiple angles, breaking traditional perspective. The result is both intellectual and emotional—a portrait of thought itself.



Woman with a Hat

Henri Matisse, 1905

Model: Marina Brungart, Set B

Matisse shocks with bold, unexpected color in this Fauvist portrait of his wife. Instead of natural tones, he paints her face in greens, purples, and oranges, expressing emotion rather than realism. Henri Matisse experimented with many styles of artwork, and his wife was a popular subject.



Bar at the Folies Bergere

Edouard Manet, 1882

Model: Jenn Naumann, Set B

Manet's final masterpiece shows a barmaid standing before a mirror at the bustling Folies-Bergère. Her distant expression contrasts with the lively crowd reflected behind her, suggesting isolation amid society's spectacle. The shimmering bottles and bright lights evoke modern Parisian life. Manet captures both glamour and sadness, and this is known as his goodbye to Parisian nightlife as he knew he was dying.



Winter

Alphonse Mucha, 1897

Model: Ivy Oatman, Set B

In *Winter*, Mucha personifies the season as a woman in long draping fabric often seen in Mucha's work. The flower details etched into the frame exemplify Art Nouveau design. Mucha's work was printed in ads and papers of his time, but the whimsical timelessness of his work continues to impress.



The Singing Butler

Jack Vettriano, 1992

Models: Meg Churray, Andy Churray, Bill Kehr, Kathy Kehr, Set B

Vettriano's *The Singing Butler* evokes romance and nostalgia with a modern twist. A couple dances on a windswept beach, attended by a butler and maid who shield them from the rain. The elegant composition and cinematic lighting create a sense of timeless glamour.



Arrangement in Grey and Black: Portrait of the Artist's Mother

James Abbott Whistler, 1871

Model: Therese Blyn, Set B

Often called Whistler's Mother, this painting is known for its simplicity and dignity. The artist presents his mother in profile, seated against a muted background. It is an enduring image of maternal grace.

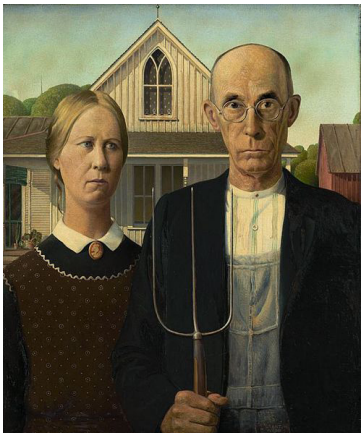


Carmen Aguado Duchesse de Montmorency

Franz Xaver Winterhalter, 1860

Model: Francesca Postiglione, Set B

Winterhalter was known for his elegant portraits of European nobility. Her satin gown and serene expression embody 19th-century refinement. She appears poised yet gentle, a vision of aristocratic beauty.



American Gothic

Grant Wood, 1930

Models: Pat Harter, Sarah Devries, Set B

Grant Wood's American Gothic portrays a farmer and his daughter (often mistaken for husband and wife) standing before their farmhouse. Their solemn faces and simple clothing capture the resilience and dignity of rural America during the Great Depression.



Woman with a Pearl Necklace in a Loge

Mary Cassatt, 1879

Model: Melissa Engle, Set B

Cassatt, an Impressionist painter, often painted women in moments of quiet observation. Here, a refined lady adjusts her gown as she looks out from her theater box. The soft brushstrokes and warm tones highlight the intimacy of a private moment in a public setting.



Self Portrait Dedicated to Leon Trotsky

Frida Kahlo, 1937

Model: Fernanda Martinez, Set C

Kahlo depicts herself holding a letter to Trotsky, she presents both her personal courage and political conviction. Her traditional Tehuana dress and vivid background emphasize Mexican identity and self-expression. As always, Kahlo merges reality and symbolism, making her inner life visible through art.



Young Girl Combing Her Hair

Pierre-Auguste Renoir, 1894

Model: Emily Kauffman, Set C

Renoir paints a tender, private moment in this Impressionist work. The soft light and rosy tones give the scene warmth and innocence. His brushwork is fluid and luminous, bringing beauty into the ordinary.

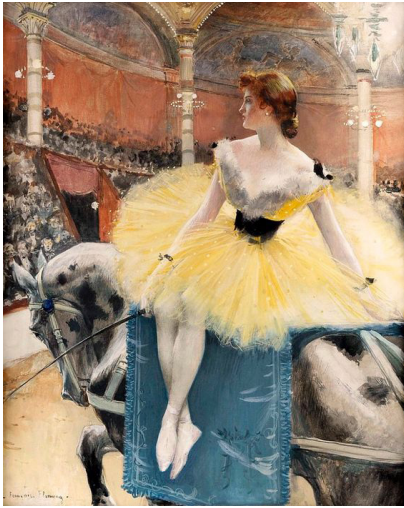


Rosina Ferrara

John Singer Sargent, 1878

Model: Chantelle Brennan, Set C

Sargent's portrait of Rosina Ferrara, a model from Capri, captures her lively spirit.. The loose brushstrokes are playful, much like the pose and expression of the model. Rosina was a popular model for several artists, beautiful and charming.



Equestrienne Au Cirque Fernando

Francois Flameng, 1893

Model: June Franklin, Set C

Flameng depicts a circus performer poised atop a white horse under bright lights. Her elegant balance and graceful costume highlight the artistry behind performance. The scene celebrates discipline and beauty and Flameng depicts each detail with care.



Day Dreams

Jules Cyrille Cavé, 1903

Model: Genevieve Timler, Set C

Cavé portrays a young woman lost in thought, surrounded by soft color and natural light. Her relaxed posture and faraway gaze invite the viewer to wonder what she dreams of. Cavé studied under Bouguereau and it is evident in the style of this piece.



The Milkmaid

Johannes Vermeer, 1657

Model: Sarah Allen, Set C

Vermeer presents a humble domestic moment with extraordinary dignity. A young woman pours milk with patient concentration, the golden light revealing every texture—the bread, the jug, the wall. Through light and composition, Vermeer elevates ordinary life into timeless art. The vibrant blue in his art, has been referred to as Vermeer blue due to its recurrence in his art.




The Mona Lisa

Leonardo da Vinci, 1503

Model: Cierra Musick Jennings, Set C

Perhaps the most recognized portrait in the world, da Vinci's Mona Lisa highlights the artist's mastery of light and shadow, known as sfumato, creating lifelike depth and softness. Her expression seems to shift as we look, making her eternally alive in the imagination.

A warm thanks to our
Generous Sponsors



*
Eric Larson, D.D.S.
The Mark Family
Mark & Danell Oxler
Kiefer Senior Care
The Farley Family
John & Victoria Kindel
The Pirtle Family
Family Promise of Greater Wichita
Legacy Bank
Mike and Gretchen Postiglione
The Blyn Family
Larson & Company, P.A.
Willow Salon and Shaded Brow Studio
Burgardt Liquor
Chad Stafford Family
Larson Family Farm
Lubbers Cars
Club Parkinson's
Bender Construction
Dick & Pat Dwyer